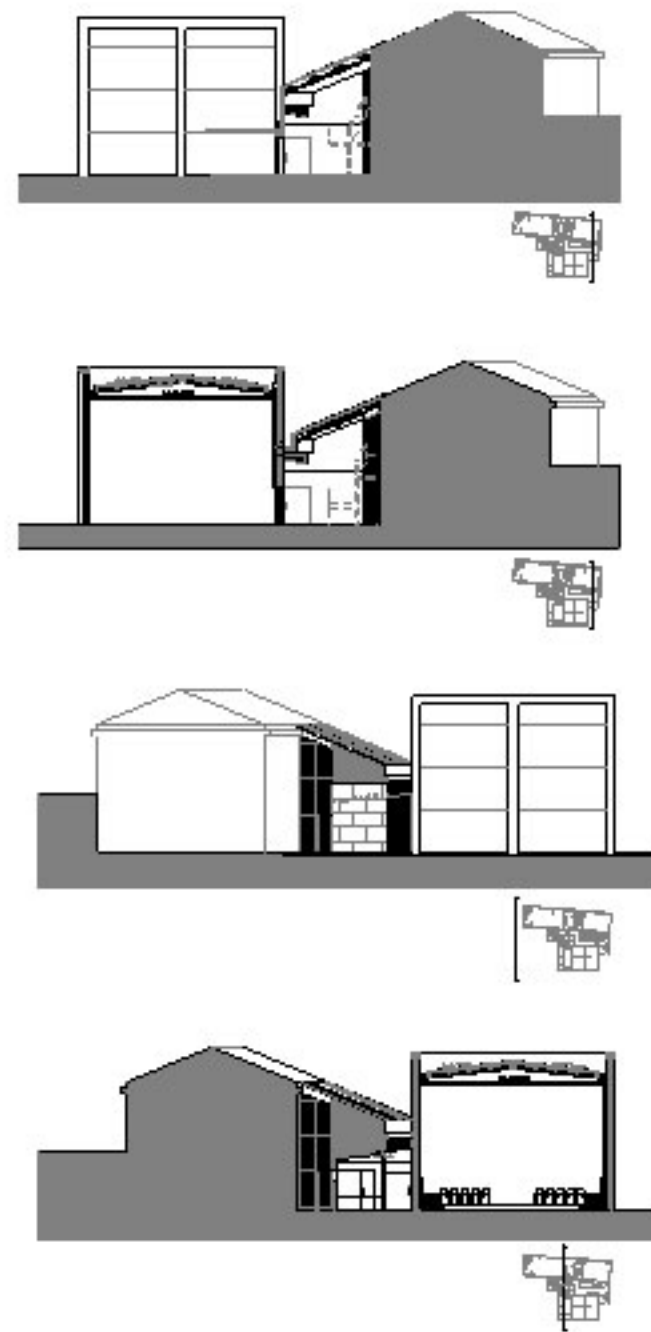
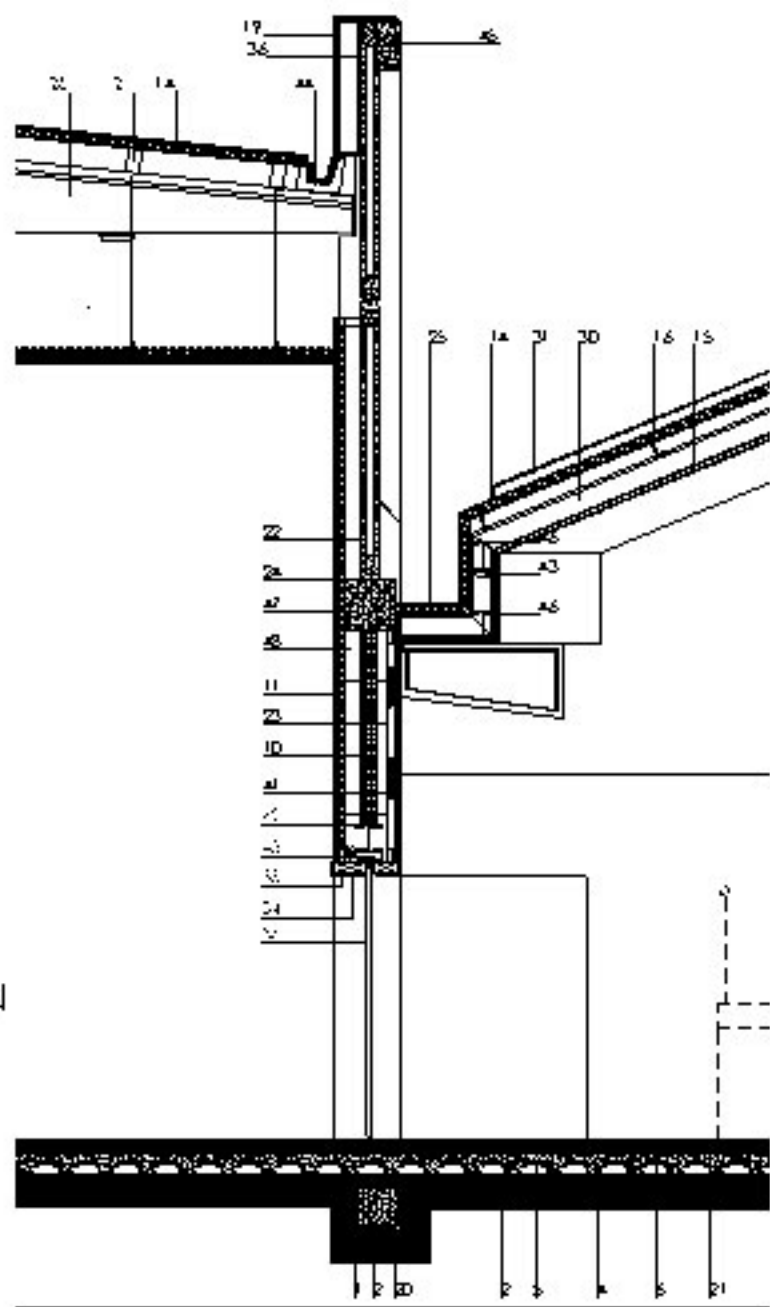
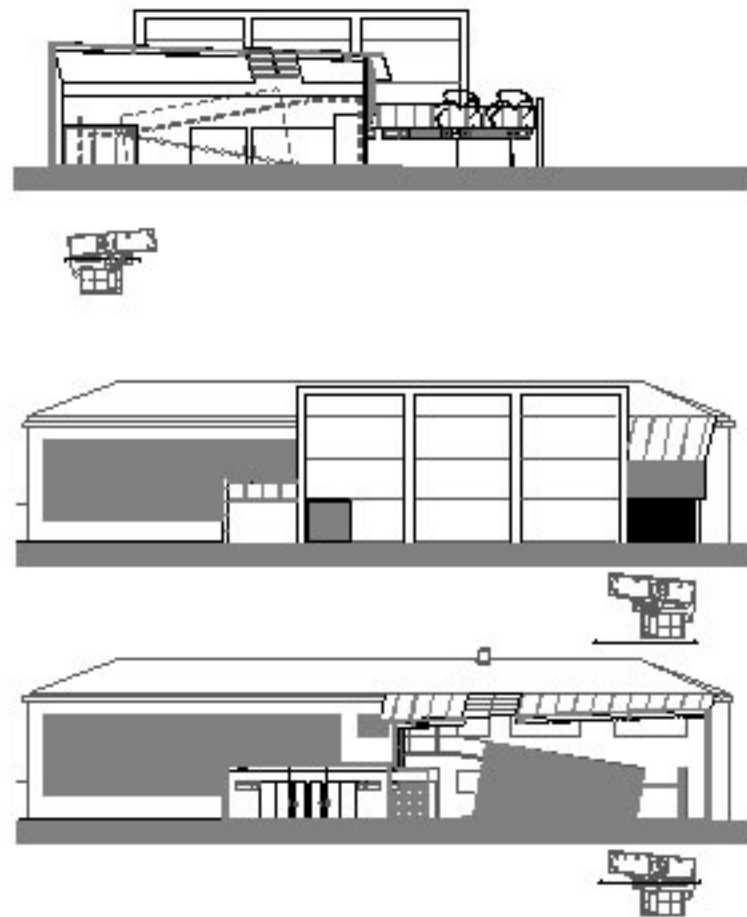
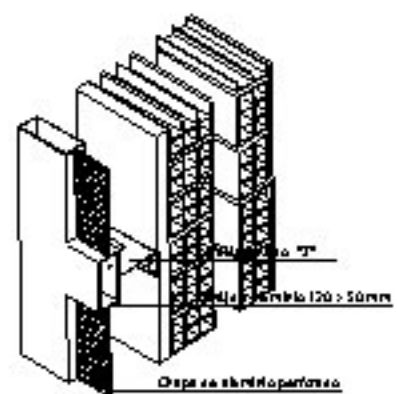


PLANTA CUBIERTA

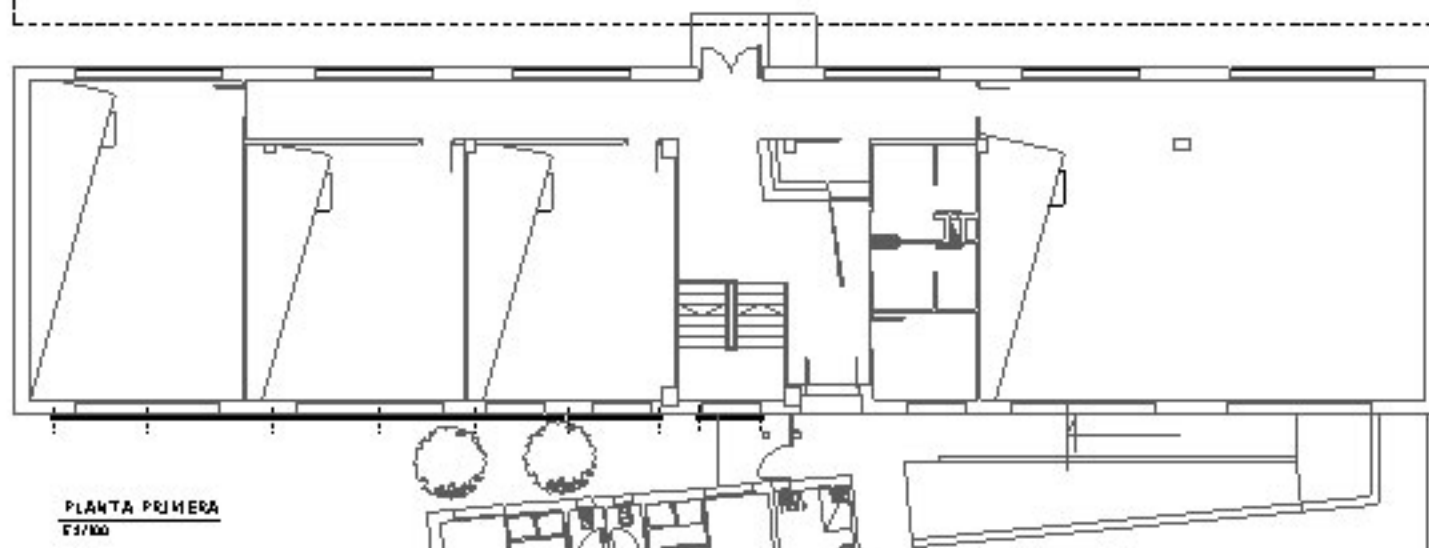
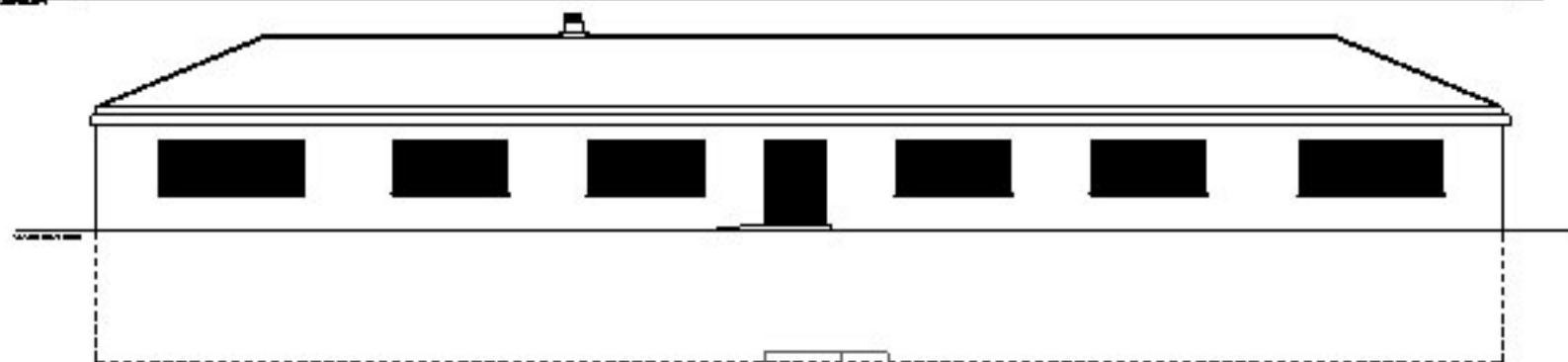
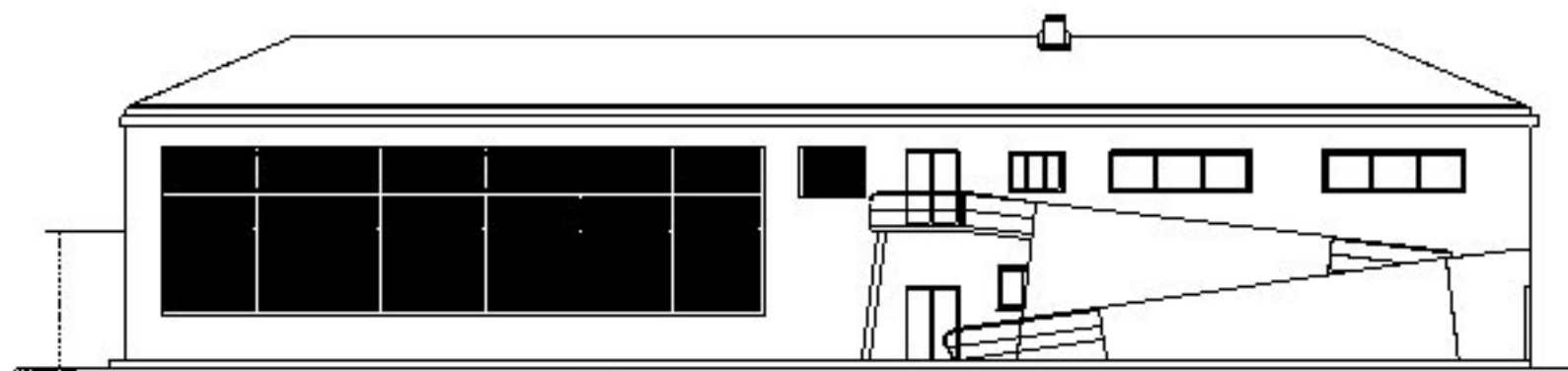
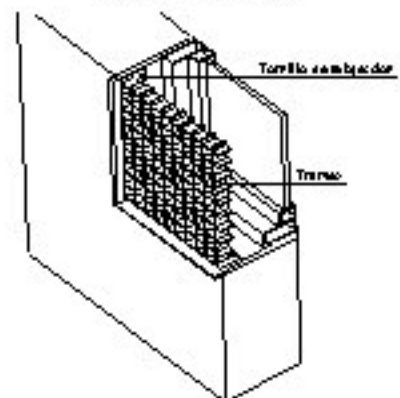


ALZADOS Y SECCION
CONSTRUCTIVA

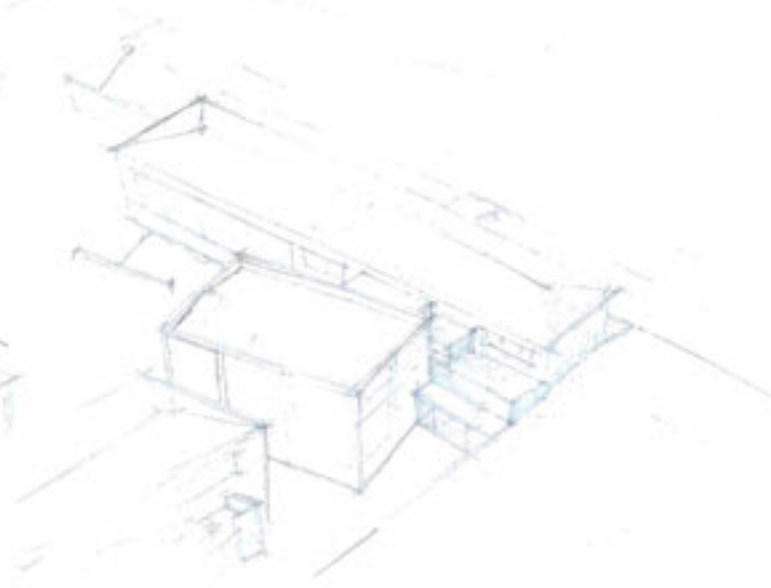
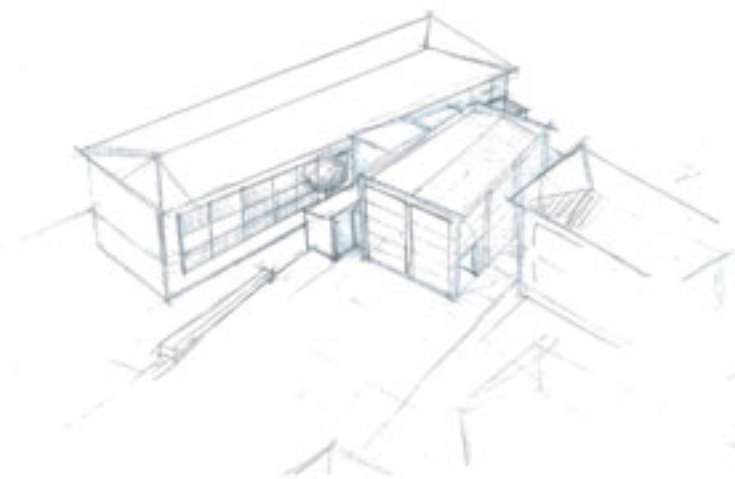
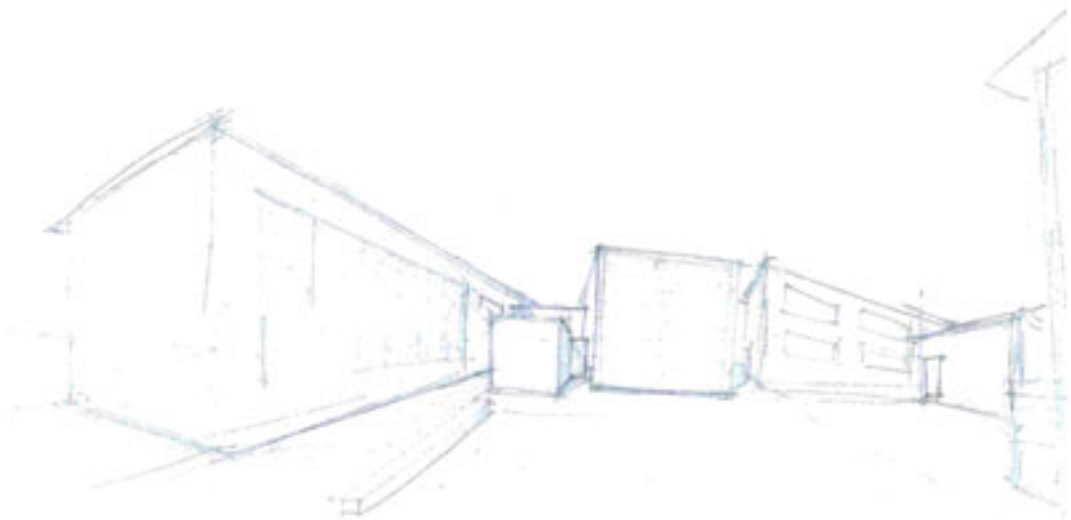
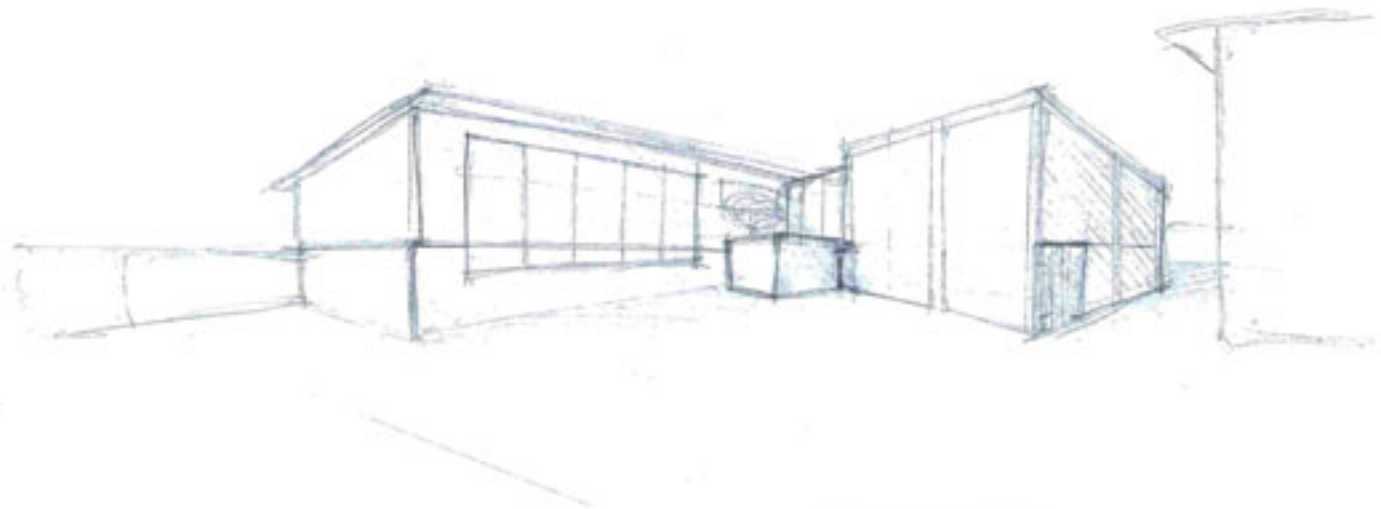
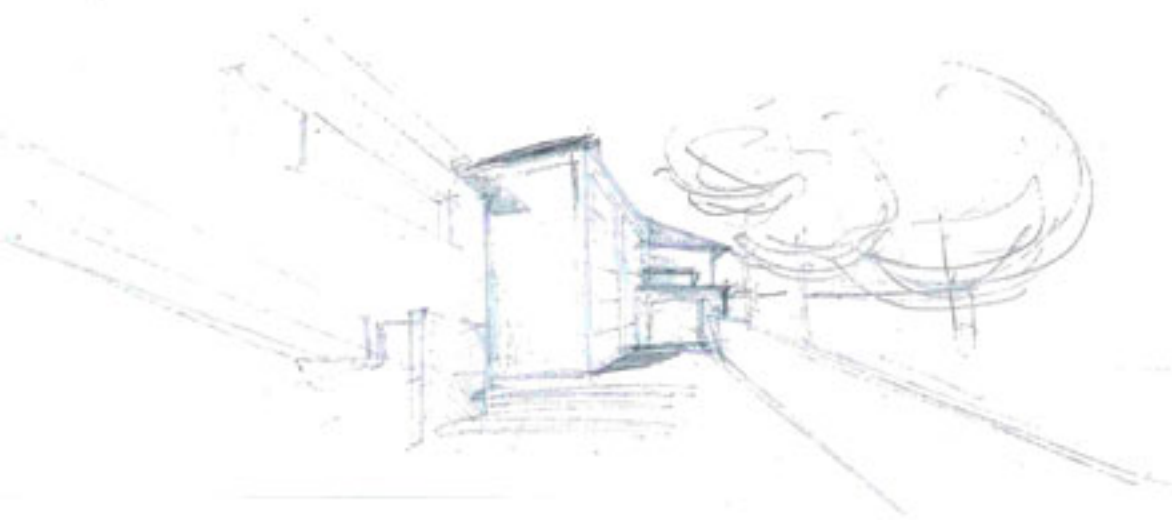
DETALLE DE COLOCACION CHAPA DE ALUMINIO

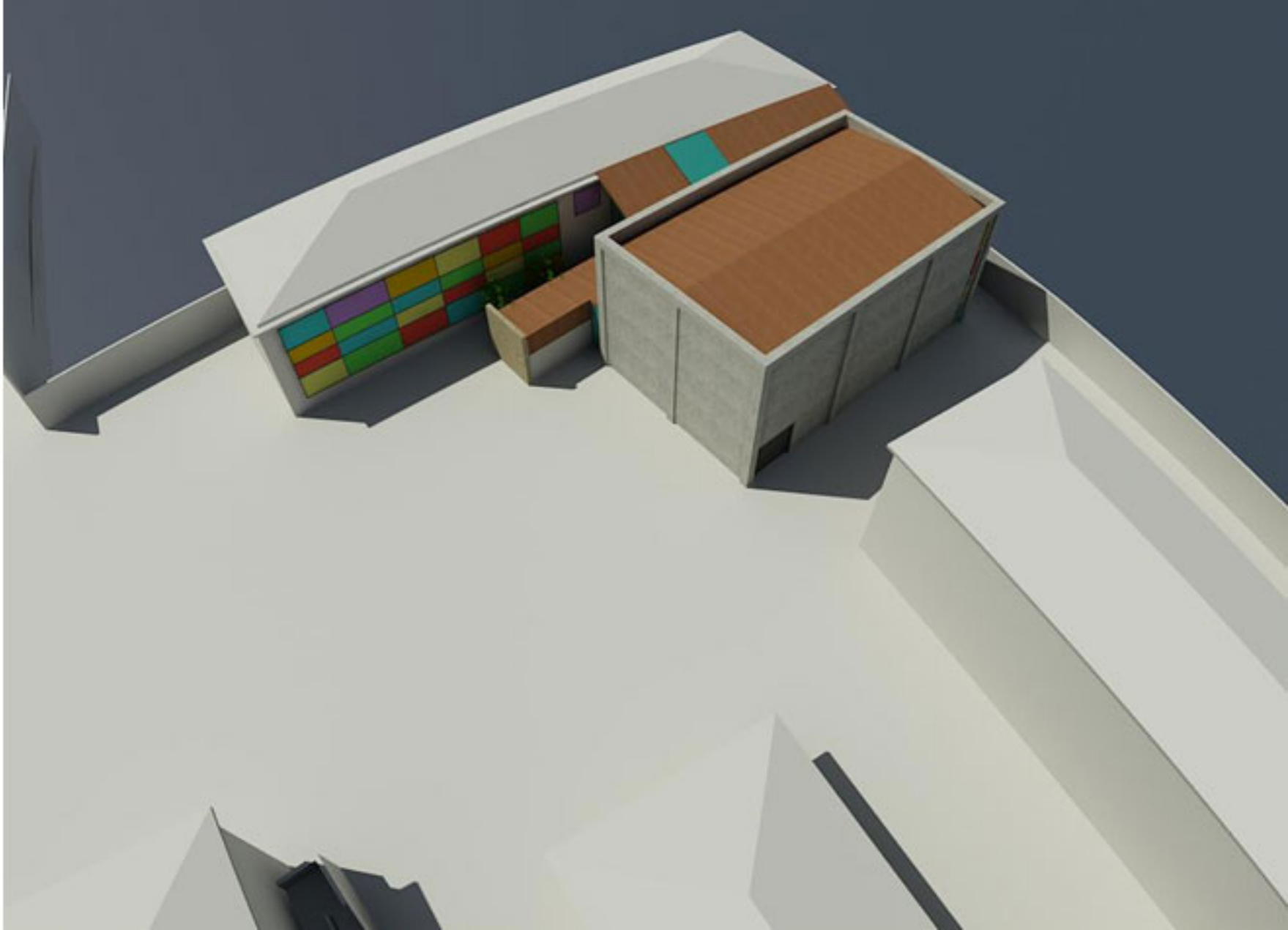


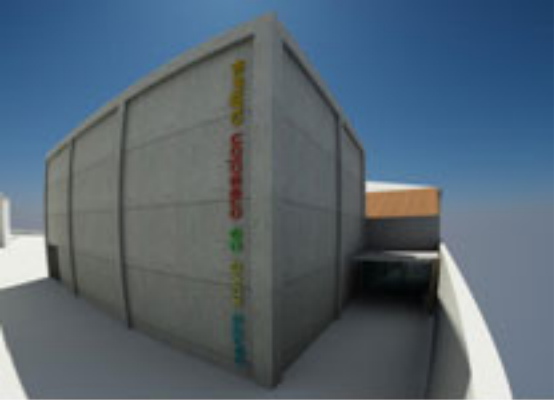
DETALLE DE COLOCACION TRAFEX



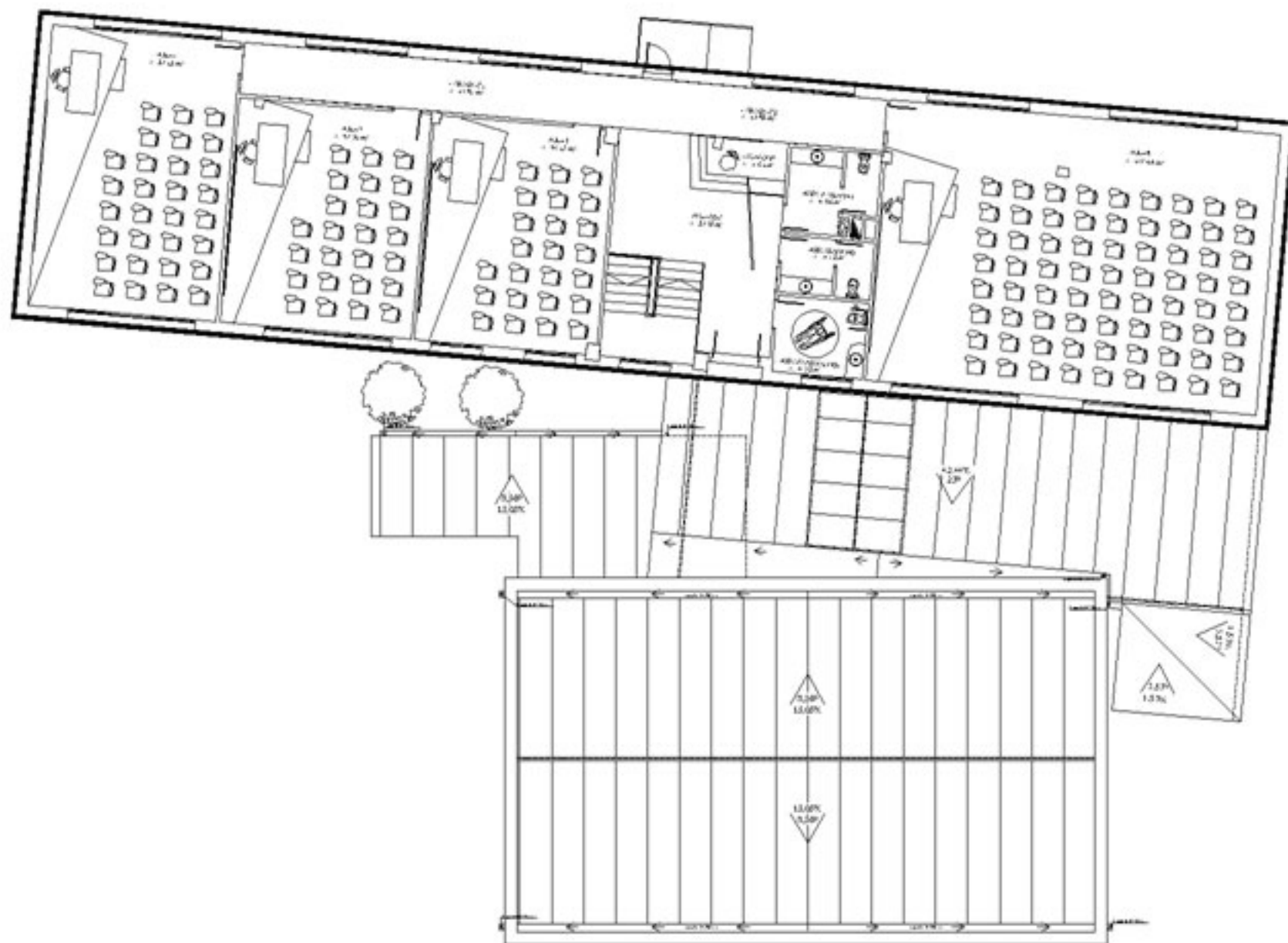








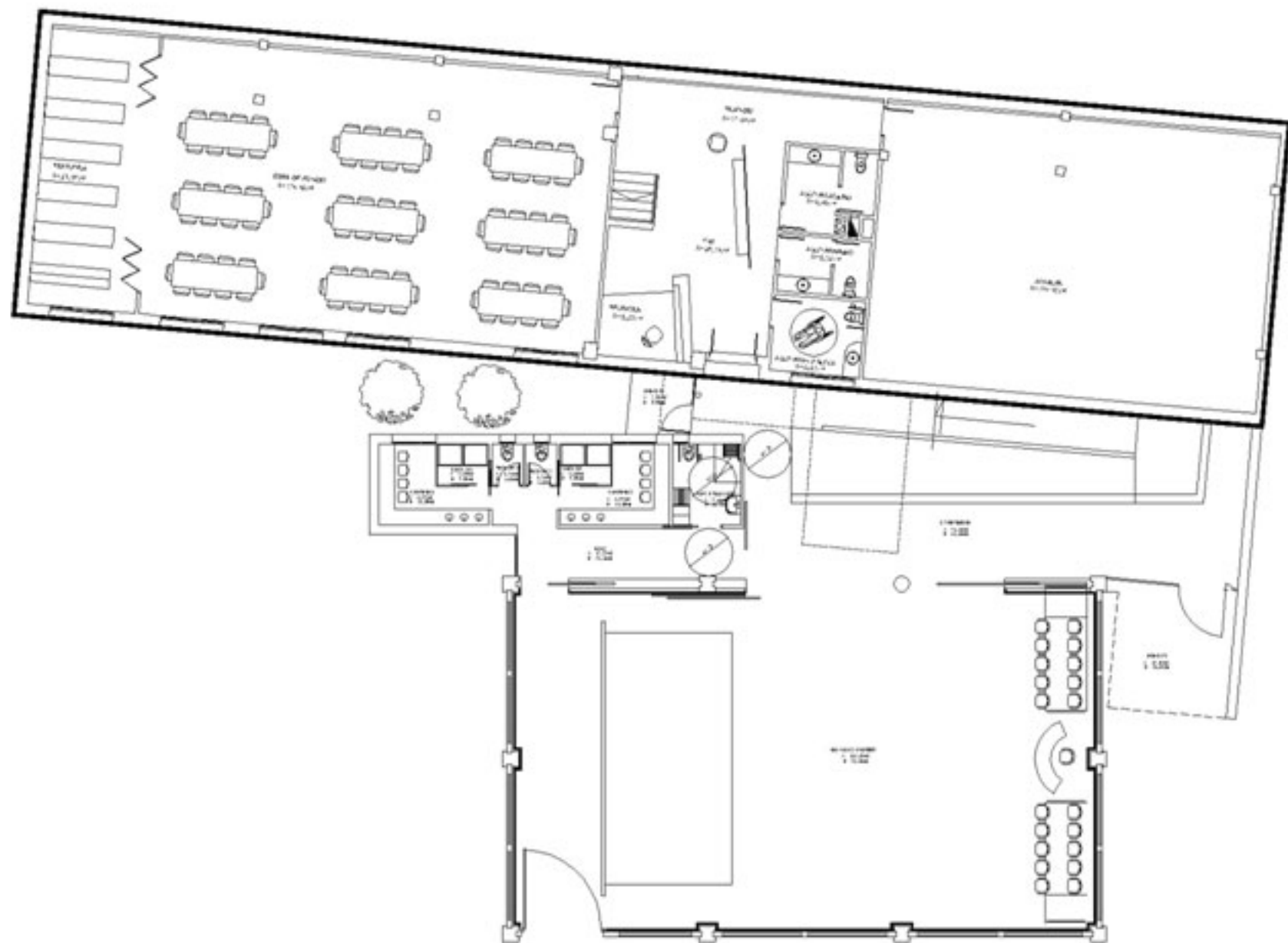




PLANTA ALTA

EDIFICIO ACTUAL

PLANTA	DEPENDENCIA	Superficie útil en m ² .
PRIMERA	Aula 1	52,12 m ²
	Aula 2	42,50 m ²
	Aula 3	40,17 m ²
	Aula 4	107,68 m ²
	Aseo masculino	6,96 m ²
	Aseo femenino	5,12 m ²
	Aseo minusválidos	6,83 m ²
	Hall - Distribuidor	22,37 m ²
	Paseo-Det. 1	19,41 m ²
	Paseo-Det. 2	13,45 m ²
	Recepción	3,01 m ²
	SUPERFICIE UTIL.	
SUPERFICIE CONSTRUIDA		375,31 m ²



PLANTA BAJA

EDIFICIO ACTUAL

TIPO	DESCRIPCION	Superficie (m ²)
BAJA	Sal	25,34 m ²
	Entrada	26,33 m ²
	Zona social	60,49 m ²
	Recepcion	5,21 m ²
	Paseo - Distribuidor	12,80 m ²
	Asa- Camarino	6,98 m ²
	Asa- Inodoro	1,30 m ²
	Asa- Inodoro	1,30 m ²
	Asa- Inodoro	6,55 m ²
	Asa- Inodoro	6,55 m ²
SUPERFICIE ÚTIL		211,86 m ²
SUPERFICIE CONSTRUIDA		215,34 m ²

EDIFICIO NUEVO

CUADRO DE SUPERFICIES

Estancias	Sup. Útil
Porche 1	15,15 m ²
Distribuidor	54,11 m ²
Aula de usos múltiples	188,62 m ²
Paseo	13,23 m ²
Camarino 1	6,55 m ²
Duchas 1	2,07 m ²
Inodoro 1	1,30 m ²
Inodoro 2	1,30 m ²
Duchas 2	2,07 m ²
Camarino 2	6,55 m ²
Asa- Camarino adaptado	5,40 m ²
Porche 2	3,78 m ²
Superficie útil total	300,13 m²
Sup. Construida total	368,76 m²